



Portfolio & Information Package

**720 King Street West, Suite 464
Toronto, ON M5V 3S5
1-877-720-6999
www.thepaintinghub.ca
HST – 81814 1830 RT0001**

Table of Contents

Mission Statement	3
Portfolio of Work.....	4
Commercial Painting	4
Residential Painting	13
Advantages of Working with The Painting Hub.....	27
Labour	27
WSIB	27
Liability Insurance	27
Safety	28
Flexible Working Hours	28
Materials	28
Equipment.....	28
HomeStars	28
Professional Image.....	28
Other Services	29
Flexible Invoicing & Terms.....	29
References:	29
Site Supervisors:	29
Project Managers:.....	29

Mission Statement

Provide the utmost professional painting services in the commercial, residential and institutional sectors by utilizing the best materials, equipment, knowledge and trades practices while keeping the best interest of the customer in mind.

Portfolio of Work

Commercial Painting

Jysk – Hamilton

Project Size: **35 000 SF**

Scope of Work: **spray ceiling deck, prime & paint walls, door slabs & frames, exterior canopy & decorative arch**



Fabricland – Hamilton

Project Size: **23 000 SF**

Scope of Work: **prime & paint walls, door slabs & frames**



Petsmart – 5095 Yonge St, Toronto

Project Size: **14 000 SF**

Scope of Work: **spray some ceilings, prime & paint walls, door slabs & frames**

Petsmart – Aurora

Project Size: 15 000 SF

Scope of Work: spray ceilings, prime & paint walls, door slabs & frames

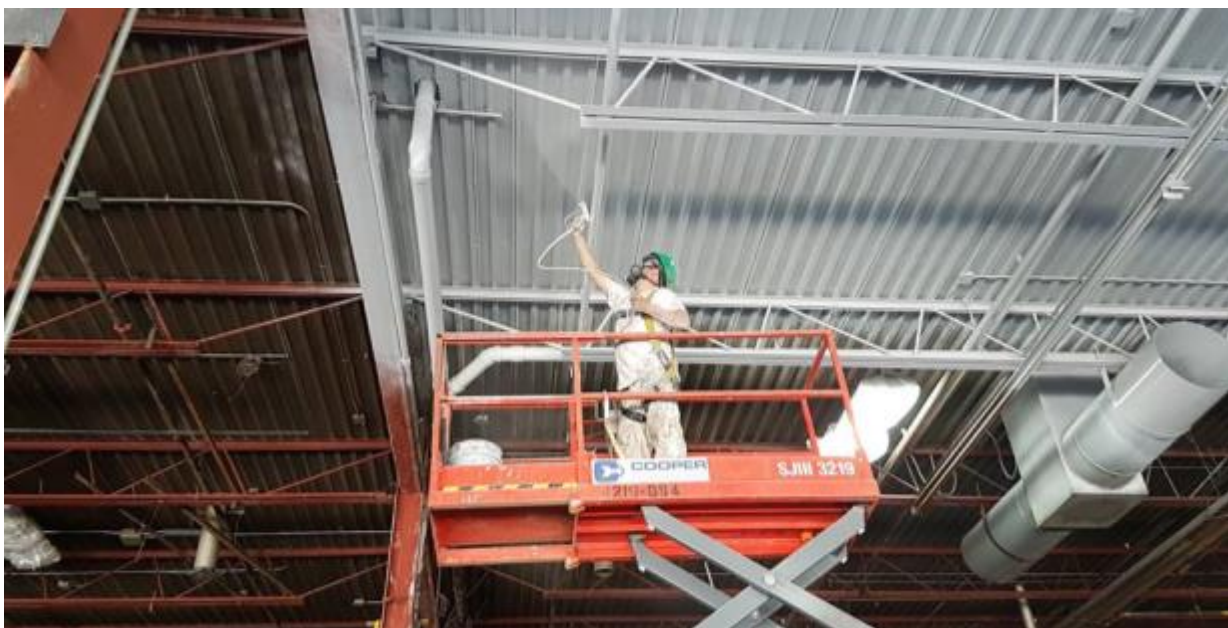


Warehouse & Offices Painting – Bethridge Rd, Toronto

Project Size: 27 000 SF (in progress)

Scope of Work:

- Warehouse (20 000 SF): spray ceilings, walls (two-tone), door slabs & frames
- Offices (7000 SF): spray exposed ceilings, prime & paint walls, door slabs & frames



Great Gulf – 54 Power St, Toronto

Project Size: **3000 SF**

Scope of Work: **wash down building exterior, paint black**



Ryerson University – Allan Slaight Building

Project Size: 3000 SF

Scope of Work: prime & paint walls, door slabs & frames, baseboards



Ryerson University – BookStore

Project Size: 3500 SF

Scope of Work: prime & paint ceilings, walls, door slabs & frames, bookshelves



Ryerson University – Architecture Workshop

Project Size: **3500 SF**

Scope of Work: **prime & paint workshop ceilings, walls, door slabs & frames**



St Christopher School – Exterior & Interior

Project Size: **10 000 SF**

Scope of Work: **exterior – soffits, fascia & window lintels, interior – classrooms & washrooms**



Lobby & Corridor Project

Project Size: **2000 SF**

Scope of Work: **prime & paint ceilings, door slabs & frames, wallpaper corridors**



Victoria Crossings, Scarborough Shopping Centre

Project Size: **20 000 SF**

Scope of Work: **prime & paint exterior metal siding & cap flashing**



Residential Painting

Condo Projects







Interior Projects







Exterior Painting



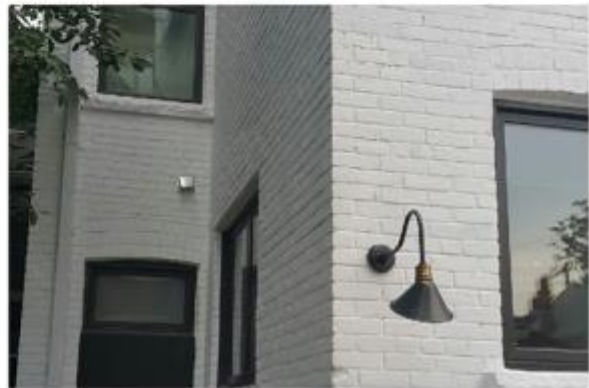
















Advantages of Working with The Painting Hub

Labour

The Painting Hub focuses on recruiting high end employees to work as part of our team. Some of our employees have over 20+ years experience in the industry! Having full-time, reliable employees allows us to provide our customers with a sizeable labour force to meet project deadlines and demands.

By providing our employees with a stable work environment, we are able to limit the use of sub-contractors. In the event of higher demand we have access to a labour force of reputable sub-contractors to ensure that project deadlines are met and promises are kept.

WSIB

Our painting operation is always WSIB compliant, keeping our employees and customers protected.

Liability Insurance

We carry \$5,000,000 in liability insurance to protect all parties associated with the project at hand.

Safety

Jobsite safety is held in the highest regard. We provide our employees with all the necessary tools and knowledge to create a safe work environment. Working at Heights training is mandatory for all employees while aerial boom & lift training is provided to all employees that use this equipment.

Flexible Working Hours

Some projects require evening, night or weekend work to be completed. We offer flexible employee working hours to ensure deadlines are met!

Materials

We use the best paints and materials from the most reputable brands on the market including; Benjamin Moore, Dulux Paints, and Sherwin Williams. By buying large volumes of paint from these companies on an annual basis, we have been able to secure competitive pricing from these brands. This gives us a competitive edge when quoting jobs as we can pass on significant savings for you, the customer.

Equipment

Only the most professional equipment is used on site when permitted. This includes the use of commercial grade airless paint sprayers and accessories, high end HVLP sprayers, door rack painting systems, pressure washers, and much more!

We have also developed relationships with some of the best equipment suppliers to ensure that we have access to all aerial boom and scissor lift machines when needed.

HomeStars

Our customers have highly rated us on HomeStars online (9.8/10). See what they have been saying about our work! (<https://homestars.com/companies/2862030-thepaintinghub-ca>)

Professional Image

Our image and reputation is important to us! It starts when we walk into people's homes and take the time to put our professional boot covers on, or when we arrive to a commercial site and take the time to meet the owners, project managers, or site supervisors to ensure everyone's expectations are properly met.

Drop sheets and plastic are used extensively throughout project areas to ensure that the customer's space and possessions are protected. All project details are worked out in advance, such as; equipment & material storage, clean-up & wash stations, key access, etc. All projects are completed to a high level of detail followed by a job-site clean-up, leaving the space clean and tidy.

Other Services

We offer other services in addition to painting. Some of these services include; drywall repair, wood replacement/fixes, small carpentry repairs, and more! This sometimes minimizes the number of tradespeople that need to be coordinated to finish a project completely and properly.

Flexible Invoicing & Terms

When it comes to payment, we are very flexible for our customers. Depending on the job at hand, we accept credit card payments, email money transfers and cheques. Payment terms and deadlines are always negotiated ahead of time to ensure that everyone's expectations are met before any work begins.

References:

Below are a list of references you can contact if you have any questions about past work we have completed.

Site Supervisors:

- John Frucci (Rochon) PH: 647-224-3846
- Rob Brouwer (J2 Construction) PH: 416-318-0058
- Paul Skeels (Torque) PH: 905-660-3334
- Jeremy Smith (Torque) PH: 905-660-3334
- Daniel Connoly (Rochon) PH: 416-638-6666

Project Managers:

- Andy Oh (Great Gulf) PH: 416-822-4494
- Riguel Boodram (J2 Construction) PH: 647-505-1524
- Gordon DeMan (DeMan) PH: 905-277-0363
- Gerry (Torque) PH: 905-660-3334
- Thomas Bewick (Rochon) PH: 416-638-6666
- Tom Knezic (Solares) PH: 416-533-8374
- Mike Carreira (Torque) PH: 905-660-3334
- Chris Cannon (Marrant) PH: 416-425-6650